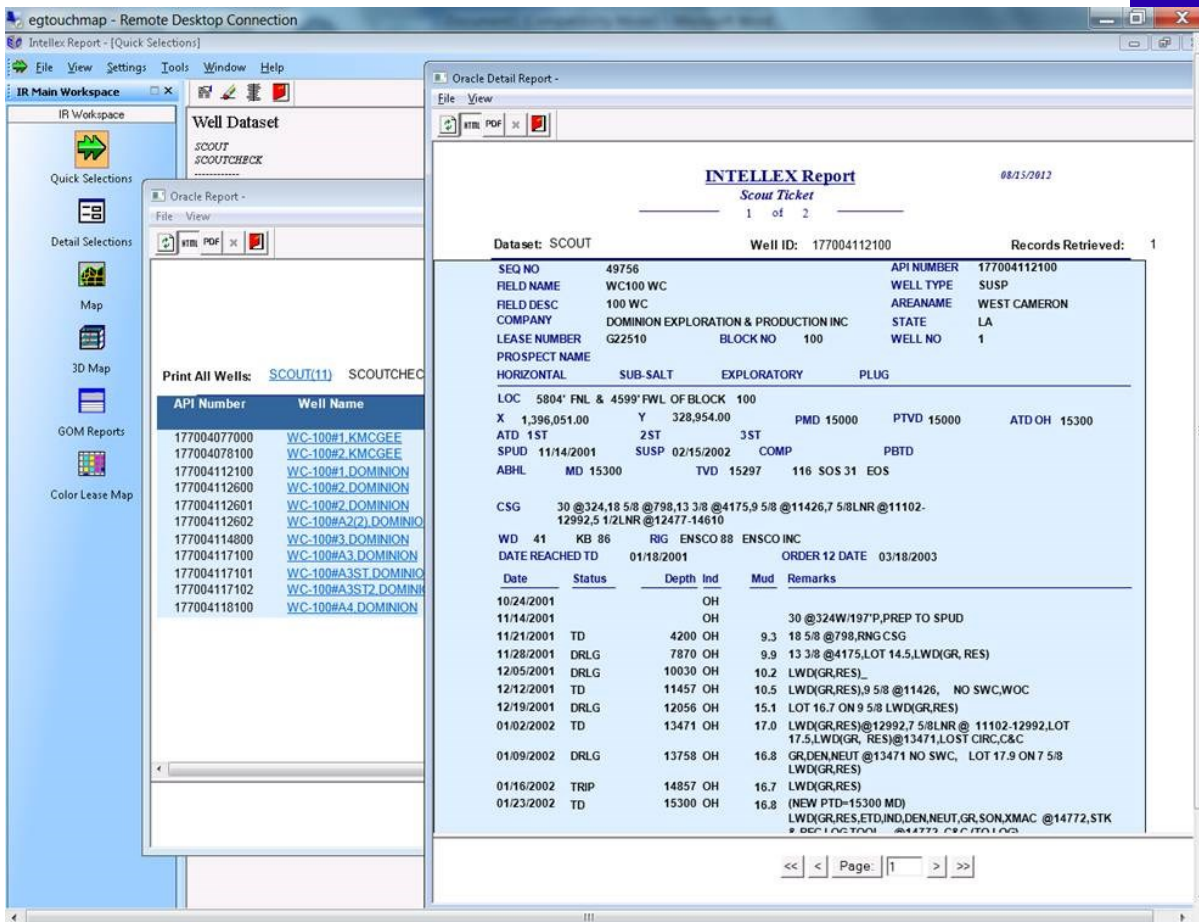




# INTELLEX® and Your Scout Data

Make the most of your  
Scout Data by joining  
the EG Scout Group.



The screenshot displays the Intellex Report software interface. The main window shows a 'Well Dataset' with a list of wells. The 'Oracle Detail Report' window is open, displaying a 'Scout Ticket' for well 177004112100. The report includes a header with the date 08/15/2012 and page 1 of 2. Below the header, there is a table with well details and a detailed log of operations.

API Number	Well Name
177004077000	WC-100#1.KMCGEE
177004078100	WC-100#2.KMCGEE
177004112100	WC-100#1.DOMINION
177004112600	WC-100#2.DOMINION
177004112601	WC-100#3.DOMINION
177004112602	WC-100#A2(2).DOMINION
177004114800	WC-100#3.DOMINION
177004117100	WC-100#A3.DOMINION
177004117101	WC-100#A3ST.DOMINION
177004117102	WC-100#A3ST2.DOMINION
177004118100	WC-100#A4.DOMINION

DATE	TIME	DEPTH	REMARKS
10/24/2001		OH	
11/14/2001		OH	30 @324W/197P,PREP TO SPUD
11/21/2001	TD	4200 OH	9.3 18 5/8 @798,RNG CSG
11/28/2001	DRLG	7870 OH	9.9 13 3/8 @4175,LOT 14.5,LWD(GR, RES)
12/05/2001	DRLG	10030 OH	10.2 LWD(GR,RES)
12/12/2001	TD	11457 OH	10.5 LWD(GR,RES),9 5/8 @11426, NO SWC,WOC
12/19/2001	DRLG	12056 OH	15.1 LOT 16.7 ON 9 5/8 LWD(GR,RES)
01/02/2002	TD	13471 OH	17.0 LWD(GR,RES)@12992,7 5/8LNR @ 11102,12992,LOT 17.5,LWD(GR, RES)@13471,LOST CIRC,C&C
01/09/2002	DRLG	13758 OH	16.8 GR, DEN,NEUT @13471 NO SWC, LOT 17.9 ON 7 5/8 LWD(GR,RES)
01/16/2002	TRIP	14857 OH	16.7 LWD(GR,RES)
01/23/2002	TD	15300 OH	16.8 (NEW PTD-15300 MD) LWD(GR,RES,ETD,IND,DEN,NEUT,GR,SON,XMAC @14772,STK # 100102700 @14772,C&C,100102

## EG Scout Data Group

The Energy Graphics Scout Data Group was formed at the request of a group of Energy Graphics clients doing business in the Gulf of Mexico who asked us to create a digital file of their Offshore Oil Scouts Association data. Our highly trained and experienced Database Department hand entered data from paper "Scout Tickets", verifying accuracy and making corrections where needed. Over the years, many of our clients have joined the "EG Scout Group," contributing corrections to their own company data and benefiting from the data contributed by other member companies. Rules for joining and maintaining the database were set by the Group members as follows:

EG Scout Group members have the advantage of having Energy Graphics make necessary edits each week when we receive the "Weekly Scout" update file from the Offshore Oil Scouts. Additionally, once Energy Graphics makes the appropriate edits each week, we create a "Weekly Scout Activity Map" and put it on the Energy Graphics website for the EG Scout Group members to download and plot at no additional cost.

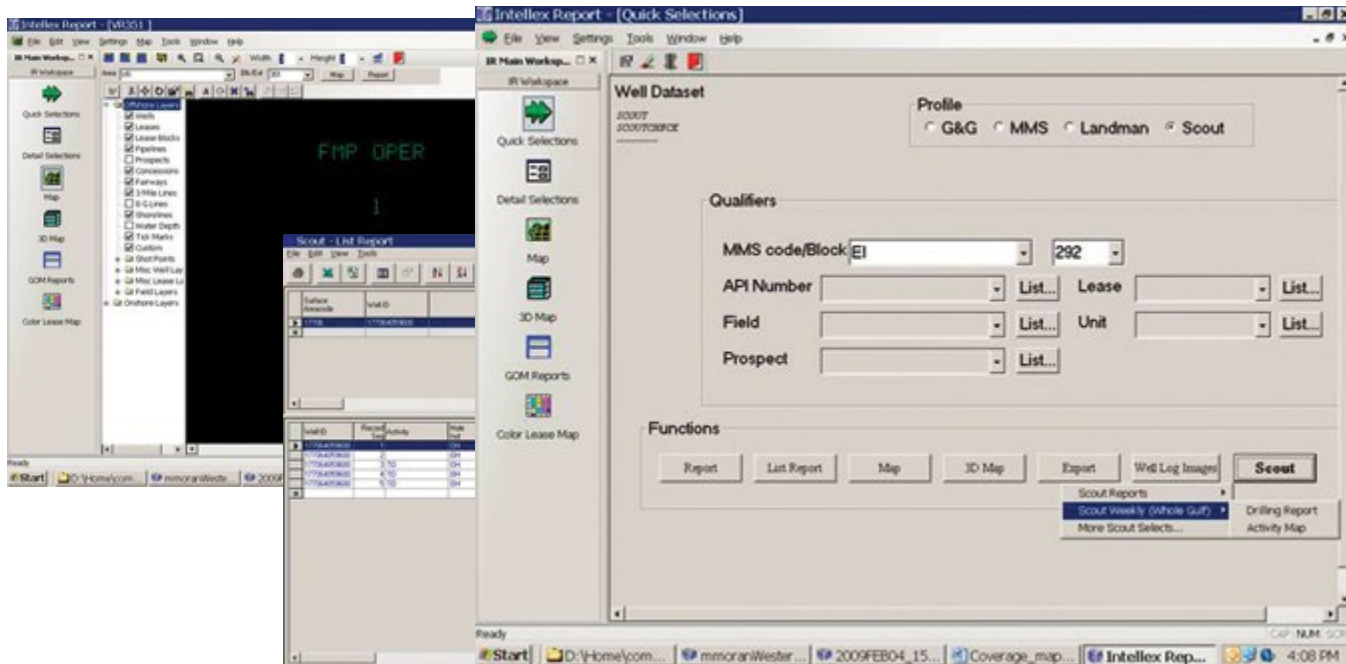


6102 Milwee St., Ste M  
Houston, TX 77092  
USA

Phone: 281-558-2061

Fax: 281-558-7340

E-mail: sales@energygraphics.com



- Eligibility: A company must be a Properly Authorized, active member of the Offshore Oil Scouts Association with the Rights to the Scout Historical data.
- Membership and Maintenance Fees: Group members pay an initial per-well fee to join the EG Scout Data Group, then pay Energy Graphics a monthly fee to receive, check, edit and enter weekly Oil Scouts updates and distribute updates to the Group.

Contact us to learn more about how to join the EG Scout Data Group.

### Weekly Edits include:

**API Numbers**—Edit API numbers when necessary so that the API number for all the other pieces of well data that you have in the different datasets in your database will match the API number in your well header file. This is critical for exporting data to load into your Interpretation projects.

**Sidetracks**—Find sidetrack or bypass wellbores in locations for wells reported at Scout Check and create a header so that they can be associated correctly with other elements of data belonging to that borehole.

**Bottom Holes**—Supply Scout Group with the bottom hole location from the Energy Graphics Directional database as the bottom hole location for the Scout well headers when we have an Energy Graphics directional available. This is not the MMS directional information. It is the verified, hand entered information from hard copy EG directional data.

### INTELLEX Scout Reports

Energy Graphics' INTELLEX PC and INTELLEX REPORT software include Scout specific tools to allow its clients who are members of Offshore Oil Scouts to access their Scout data seamlessly along with the extensive suite of Energy Graphics databases. Scout reports from INTELLEX include:

- ◆ Scout Ticket Reports
- ◆ Weekly Drilling Report
- ◆ Weekly Scout Editor Reports
- ◆ Custom List Reports with tabs to associated INTELLEX Gulf of Mexico data
- ◆ Scout Drilling Remarks Detail Reports
- ◆ Summary Style reports with links to Detail Report for each well
- ◆ Weekly Scout Check Reports
- ◆ Weekly Activity Map
- ◆ Scout Completion Detail Reports
- ◆ Scout Casing Detail Reports